

IPFA

Learning



Discover more  
about IPFA  
Learning

**Professional development and progression**  
**By practitioners for practitioners**



IPFA

Learning

Learning is IPFA's professional development programme created to provide practitioners in the large-scale infrastructure sector with access to the most comprehensive, relevant, practitioner-led courses, enabling them to build solid foundational skills, develop careers and unlock future potential

**Practical training, development and networking for different stages of your career, delivered by practitioners for practitioners**

# Our Learning Mission

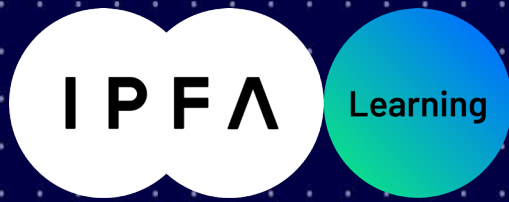
*Our mission is to provide members and the sector with the opportunity to access the best professional learning and development programme.*

*Developed by practitioners, for practitioners. Our learning and development offering is integral to the culture of learning that is core to the purpose of the IPFA and is to enable infrastructure professionals to unlock their potential as individuals; teams and across organisations with the aim of benefitting the IPFA member community and our industry overall.*

**Professional development and progression**

**By practitioners for practitioners**

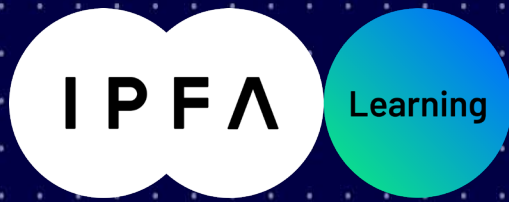




# Key Features

- **By industry practitioners for industry practitioners.** IPFA Learning is mutually beneficial: courses are created by member organisations who benefit in many ways by sharing their knowledge and expertise creating a shared learning experience, as well as contributing to the professional development and progress of the member community and industry overall.
- **Breadth of subject matter expertise** - IPFA is the only global professional cross-sector body so has knowledge and can offer training applicable to all vertical sectors.
- **An agile and flexible learning proposition** - As an agile and flexible network, IPFA can offer agile and flexible training\* options / solutions.
- **High value learning at a lower cost** - IPFA is not for profit which means courses that are high value can be offered a lower cost than commercial professional development providers.
- **Practitioner-led Development** - Coaches and trainers are typically current practitioners, so courses are up to date, relevant, contextual and combine structured learning with knowledge transfer.
- IPFA is a **trusted partner** with a 25 year heritage
- **Global coverage** - IPFA is 'member-driven' by region and sector, so we will have a range of courses that are current and designed to cater to specific regions / geographic markets,

**Professional development and progression**  
**By practitioners for practitioners**



# About our courses

- Our educational programmes provide essential and practical learning and development.
- Enhance your infrastructure and project finance knowledge whilst networking with fellow trainees.
- Pitched at different levels; our courses will support you at different stages of your career.
- All of our courses are delivered by experienced practitioners who have negotiated successful projects. Using case studies chosen for their relevance to the country and sectors involved, you will receive practical guidance on the fundamentals of infrastructure and energy financing.
- Accessible to all. Members receive discounted rates.

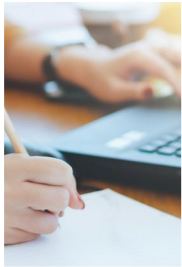


**Professional development and progression.**  
**By practitioners for practitioners**



## In-person: Project Finance/PPP

- PROJECT FINANCE FUNDAMENTALS – 1 day course: International
- PROJECT FINANCE ADVANCED – 2 day course: International
- UNDERSTANDING PROJECT FINANCE & PPPS – 3 day course: Melbourne & Sydney



## Virtual classroom: Infrastructure & Energy

- ESG FUNDAMENTALS – Half day course: EMEA, APAC & North America
- MODERN DEVELOPMENTS – 9 x 2hr weekly modules: EMEA



## In-house & bespoke courses

- We provide in-house and bespoke training, tailored to the needs of your organisation.
- Get in touch with our friendly team at [learning@ipfa.org](mailto:learning@ipfa.org) for more information.



# Upcoming Courses

## Australia



[Enquire Now](#) Melbourne | Understanding Project Finance & PPPs

## Virtual



From 4 Oct -6 Dec | Masterclass in Infrastructure Investment & Finance

## UK & Continental Europe



13 Oct London | Project Finance Fundamentals  
27 Oct Amsterdam | Project Finance Fundamentals  
16-17 Nov London | Project Advanced  
30- 31 Nov Amsterdam | Project Finance Advanced

## Middle East



17 Oct Dubai | Project Finance Fundamentals  
14 Nov Riyadh | Project Finance Fundamentals

If you can't see an appropriate location, get in touch

**Professional development and progression.**  
**By practitioners for practitioners**



# NEXT STEPS



**Review the  
options**



**Choose your course**



**Get in touch**

Contact us : [learning@ipfa.org](mailto:learning@ipfa.org) | T: +44 (0)20 7427 0900 | [www.ipfa.org](http://www.ipfa.org)



IPFA

Learning

# Connect with us

Connect with us to learn more about how you can team can benefit from IPFA Learning.



**Madeline Lowe**  
Head of Learning &  
Engagement  
[learning@ipfa.org](mailto:learning@ipfa.org)

IPFA's



**Gabby Jarvis**  
Learning Manager  
[learning@ipfa.org](mailto:learning@ipfa.org)

Practical training, development and networking for different stages of your career, delivered by practitioners for practitioners