

IPFA

Learning



**Discover more
about IPFA
Learning**

Professional development and progression
By practitioners for practitioners



IPFA

Learning

Learning is IPFA's professional development programme created to provide practitioners in the large-scale infrastructure sector with access to the most comprehensive, relevant, practitioner-led courses, enabling them to build solid foundational skills, develop careers and unlock future potential

Practical training, development and networking for different stages of your career, delivered by practitioners for practitioners

Our Learning Mission

Our mission is to provide members and the sector with the opportunity to access the best professional learning and development programme.

Developed by practitioners, for practitioners. Our learning and development offering is integral to the culture of learning that is core to the purpose of the IPFA and is to enable infrastructure professionals to unlock their potential as individuals; teams and across organisations with the aim of benefitting the IPFA member community and our industry overall.

Professional development and progression

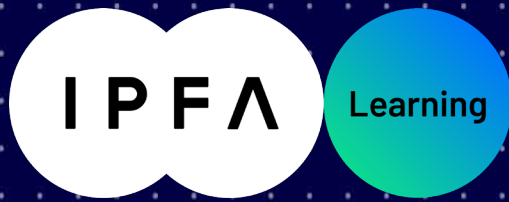
By practitioners for practitioners



Key Features

- **By industry practitioners for industry practitioners.** IPFA Learning is mutually beneficial: courses are created by member organisations who benefit in many ways by sharing their knowledge and expertise creating a shared learning experience, as well as contributing to the professional development and progress of the member community and industry overall.
- **Breadth of subject matter expertise** - IPFA is the only global professional cross-sector body so has knowledge and can offer training applicable to all vertical sectors.
- **An agile and flexible learning proposition** - As an agile and flexible network, IPFA can offer agile and flexible training* options / solutions.
- **High value learning at a lower cost** - IPFA is not for profit which means courses that are high value can be offered a lower cost than commercial professional development providers.
- **Practitioner-led Development** - Coaches and trainers are typically current practitioners, so courses are up to date, relevant, contextual and combine structured learning with knowledge transfer.
- IPFA is a **trusted partner** with a 25 year heritage
- **Global coverage** - IPFA is 'member-driven' by region and sector, so we will have a range of courses that are current and designed to cater to specific regions / geographic markets,

Professional development and progression
By practitioners for practitioners



About our courses

- Our educational programmes provide essential and practical learning and development.
- Enhance your infrastructure and project finance knowledge whilst networking with fellow trainees.
- Pitched at different levels; our courses will support you at different stages of your career.
- All of our courses are delivered by experienced practitioners who have negotiated successful projects. Using case studies chosen for their relevance to the country and sectors involved, you will receive practical guidance on the fundamentals of infrastructure and energy financing.
- Accessible to all. Members receive discounted rates.



Professional development and progression.
By practitioners for practitioners

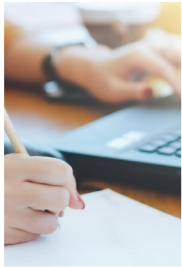


Courses we offer



In-person: Project Finance/PPP

- PROJECT FINANCE FUNDAMENTALS – 1 day course: International
- PROJECT FINANCE ADVANCED – 2 day course: International
- UNDERSTANDING PROJECT FINANCE & PPPS – 3 day course: Melbourne & Sydney



Virtual classroom: Infrastructure & Energy

- ESG FUNDAMENTALS – Half day course: EMEA, APAC & North America
- MODERN DEVELOPMENTS – 9 x 2hr weekly modules: EMEA



In-house & bespoke courses

- We provide in-house and bespoke training, tailored to the needs of your organisation.
- Get in touch with our friendly team at learning@ipfa.org for more information.

See next page for
latest dates

IPFA

Learning

Upcoming Courses

Australia

2024 dates coming soon

Sydney | Understanding Project Finance & PPPs

Melbourne | Understanding Project Finance & PPPs

L

Virtual

2024 dates coming soon

Masterclass in Infrastructure Investment & Finance

L

UK & Continental Europe

16-17 Nov London | Project Advanced

30 Nov – 1 Dec Amsterdam | Project Finance Advanced

2024 dates coming soon

London | Project Finance Fundamentals

Amsterdam | Project Finance Fundamentals

L

Middle East

14 Nov Riyadh | Project Finance Fundamentals

2024 dates coming soon

Dubai | Project Finance Fundamentals

L

If you can't see an appropriate location, get in touch

In development: ESG & Sustainable
Financing, Americas & APAC locations

Professional development and progression.
By practitioners for practitioners



NEXT STEPS



**Review the
options**



Choose your course



Get in touch

Contact us : learning@ipfa.org | T: +44 (0)20 7427 0900 | www.ipfa.org

IPFA

Learning

Connect with us

Connect with us to learn more about how you can team can benefit from IPFA Learning.



Madeline Lowe
Head of Learning &
Engagement
learning@ipfa.org

IPFA's



Gabby Jarvis
Learning Manager
learning@ipfa.org

Practical training, development and networking for different stages of your career, delivered by practitioners for practitioners