



IPFA



The power of connection to create success

Membership Value Guide 2024



Your 2024 Membership

In 2024, we will continue to cover the breadth and depth of infrastructure investment, with a strong focus on the energy transition.



We will strengthen our global community by introducing new ways to explore shared interests through the formation of our themed based Networks & Special Interest Groups.

The Future Leaders Network is expanding in all regions, providing more opportunities for members to actively participate and influence industry changes, particularly in accelerating net-zero initiatives.

IPFA Learning has recently been launched. Our professional development pathway will provide a range of courses worldwide, at different levels, as well as bespoke, in-house training options.

We will continue to build on our digital offering, with access to a growing Knowledge Hub housing expert advice and industry trends on demand, including thought leadership provided by Members.

Being a part of IPFA connects you to a community around the world and your membership subscription enables us to continue to be the association for infrastructure and energy professionals, providing support to members at every stage of their career.

We look forward to connecting with you.

Daisy Brooker
CEO

2024 Sectors & Themes:

- Energy Transition & Accelerating Net-Zero
- Energy & Natural Resources
- Power
- Digital Infrastructure
- ESG
- Transport
- Social Infrastructure
- Evolution of PPPs
- Equity, Diversity & Inclusion
- Emerging Markets



Our Global Community

IPFA

The global network for infrastructure and energy professionals worldwide.

We are independent, non-profit, and here to support and connect a growing community that's passionate about financing infrastructure and energy projects.

Our diverse membership includes the industry's leading investors, lenders, advisors, developers, sponsors and government institutions. From senior leaders through to the next generation starting out, no other platform has the network or ability to enable connections the way we do.

600+ Member organisations

20k+ Connected individuals

200+ Member volunteers

2k+ Future Leaders

20+ Regional networks



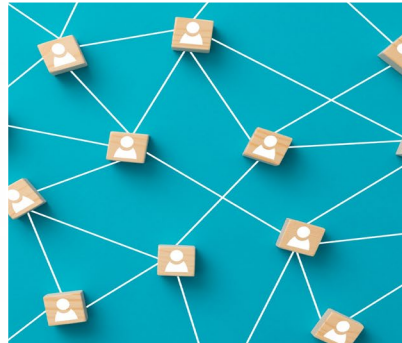
How IPFA can enable your business goals

Capacity building



- Stay ahead of the curve on the latest trends & opportunities
- Expand your knowledge by hearing from leading figures in industry
- Outsource your team's professional development

Industry connections



- Unrivalled networking
- Connections to a global community of 600+ public and private organisations
- Gain unique insights and build competitive advantage

Business growth



- Share thought leadership across renowned platforms
- Showcase your expertise to a global audience
- Increase brand elevation & name-recognition

Industry influence



- Influence the future of our industry
- Be a leading voice for collaboration, solutions and innovation
- Volunteer your expertise to steer the direction of IPFA

Membership at a glance in 2024



Regional Team Access

Connect with a local community of members and stay up to date on the latest trends and industry developments in your region - Europe, North America, APAC & the Middle East & Africa.



Future Leaders Network (FLN)

A growing global community of 2K+ early to mid-career professionals, shaping careers, building peer networks and developing their skillset.



Hosting & Speaking Opportunities

Leverage our network to showcase your expertise and increase exposure as a speaker, author or by hosting an event or webinar.



Regional Events & Roundtables and Webinars

A dedicated pipeline of in-person events, social receptions, roundtables and webinars in each of our branches.



Networks & Special Interest Groups (SIGs)

Lead or participate in member-led, theme-based, virtual networks & working groups to discuss new developments & influence the direction of the industry.



Job Posts

Promote your current vacancies and job opportunities to our network.



Global Webinars

Join interactive webinars with live Q&A's and virtual networking connecting you with global developments and members around the world.



Council & Future Leaders Committee

Raise your profile and join one of our 25 councils and committees dedicated to shaping the delivery of our global operations.



Logo Featured

Full members featured on our website, plus everyone featured in our member directory. IPFA Member logo for your own use.



Knowledge Hub

An extensive on-demand content library offering exclusive access to expert advice and industry trends through bite-sized content as well as sharing your thought leadership.



Facilitated introductions

Our members are your network. Let us introduce you to our diverse and expanding global community.



IPFA Learning*

Providing comprehensive, practitioner-led training courses, enabling members to build solid foundational skills, develop careers and unlock future potential.

2024 Membership Tiers



	LARGE TEAM	REGIONAL TEAM	SMALL TEAM		
	FULL Full unlimited access	LOCAL Selected region only	CORE Limited team access	SOLO Sole practitioner	PUBLIC Public sector organisation
Regional Branch Access	All Regions	Access to One Region	Access to One Region	All Regions	All Regions
Team Access	Unlimited	Unlimited	10 Users	1 User	Unlimited
Events, Roundtables & Regional Webinars	✓	✓	✓	✓	✓
Knowledge Hub	✓	✓		✓	✓
Future Leaders Network (FLN) & Committees	✓	✓			✓
Global Webinars	✓			✓	✓
Networks & Special Interest Groups (SIGs)	✓			✓	✓
Hosting Opportunities	✓	✓	✓	✓	✓
Facilitated Introductions	✓	✓			✓
IPFA Branch Councils	✓	✓	✓	✓	✓
Job Posts	✓				✓
Logo Featured	Homepage & Member Directory	Member Directory only	Member Directory only	Member Directory only	Member Directory only
IPFA Learning (*Member Discount)	✓	✓	✓	✓	✓

See website to view membership fees



Which membership category is right for my organisation?

FULL Full unlimited access	<p>Our top-tier membership category with exclusive benefits for those wanting to leverage our worldwide network or who have international teams.</p> <p>Ideal for those keen on staying updated with global developments, this will give your team access to our Global Webinars, Networks & Special Interest Groups.</p> <p><i>*IPFA 2023 Global Members should opt for this category to ensure no reduction or loss in their benefits and services. Current Regional Members are invited to select this option to increase their level of access.</i></p>
LOCAL Selected region only	<p>Provides regional team access to specific membership services.</p> <p>Suited for organisations with a strategic focus on specific markets within IPFA's regional categorization and do not want to access wider benefits:</p> <p>Europe (including Turkey) North America Africa and the Middle East Asia Pacific (including Australia)</p> <p><i>*IPFA 2023 Regional Members should opt for this category to continue access to their existing benefits.</i></p>
CORE Limited team access	<p>Restricted team access for up to ten individuals, featuring essential benefits tailored to smaller organisations or more nascent businesses within the industry.</p> <p><i>*This is a new category for 2024 and advise current members that choosing this option will result in a reduction of your membership benefits to a limited set of services.</i></p>
SOLO Sole practitioner	<p>Ideal for independent sole practitioners or those who have retired who wish to remain connected with industry.</p> <p><i>* Opting for this category will require approval by IPFA</i></p>
PUBLIC Public sector organisation	<p>Honorary membership is open to public sector organisations, with unlimited team access to all membership services.</p>



What our members say



I really appreciate that IPFA provides a convenient platform (both virtual and in-person) to easily network and share views and experience with so many professionals from different fields and geographies and spanning from juniors to board-level – all around the very broad common theme of project finance.



It allows people the same interests in the same business to meet regularly and keep in touch.



A truly inclusive association where you are always welcome to contribute.



Connecting younger professionals with decision makers. Allows junior professionals to have the broader perspective on what's happening in industry and provides a mentorship within the sector.



Always talking about topical issues good quality events.



NEXT STEPS



**Review the
options**



**Select your
membership level**



**Complete our
renewals form
or get in touch**

Contact us : membership@ipfa.org | T: +44 (0)20 7427 0900 | www.ipfa.org