

The IPFA logo consists of the letters 'IPFA' in a bold, white, sans-serif font, centered within a white graphic element that resembles two overlapping circles or a stylized speech bubble. This logo is positioned in the top-left corner of the slide.

**IPFA**

# The power of connection to create success

**2025 Membership Renewal**



# Your 2025 Membership

For 2025 we will continue to strengthen and develop our service offering that fits the evolving needs of our members. With a refreshed Learning programme, improved regional events, stronger global collaboration, and a thriving Future Leaders Network, IPFA is well-positioned to support members at every stage of their career.



Our programming and resources will cover the breadth and depth of infrastructure investment, with a continued focus on the energy transition, keeping members informed and prepared for future challenges and opportunities.

Being a part of IPFA connects you to a global professional network of over 600 organisations, offering exclusive insights, opportunities for collaboration, and a pivotal role in shaping the future of our industry.

We look forward to connecting with you.

Daisy Brooker  
CEO

- **Green & sustainable infrastructure**
- **Emerging technologies (carbon capture, hydrogen)**
- **Energy system challenges**
- **Nuclear energy & SMRs**
- **Transport electrification & mobility solutions**
- **The evolving impact of policy & regulation**
- **Digitalisation & connectivity**
- **The role of AI in the infrastructure & energy sector**



# Our Global Community

## IPFA

The global network for infrastructure and energy professionals worldwide.

We are independent, non-profit, and here to support and connect a growing community that's passionate about financing infrastructure and energy projects.

Our diverse membership includes the industry's leading investors, lenders, advisors, developers, sponsors and government institutions. From senior leaders through to the next generation starting out, no other platform has the network or ability to enable connections the way we do.

**600+** Member organisations

**20k+** Connected individuals

**200+** Member volunteers

**2k+** Future Leaders

**20+** Regional networks





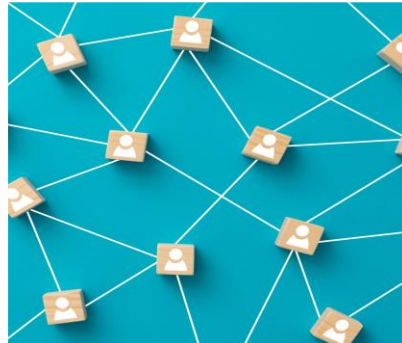
# How IPFA can enable your business goals

## Capacity building



- Stay ahead of the curve on the latest trends & opportunities
- Expand your knowledge by hearing from leading figures in industry
- Outsource your team's professional development

## Industry connections



- Unrivalled networking
- Connections to a global community of 600+ public and private organisations
- Gain unique insights and build competitive advantage

## Business growth



- Share thought leadership across renowned platforms
- Showcase your expertise to a global audience
- Increase brand elevation & name-recognition

## Industry influence



- Influence the future of our industry
- Be a leading voice for collaboration, solutions and innovation
- Volunteer your expertise to steer the direction of IPFA

# Membership services at a glance



## Regional Team Access

Connect with the local community and keep up to date with industry developments.



## Regional Events, Roundtables & Webinars

The latest industry news with networking opportunities.

Future  
Leaders

## Future Leaders Network (FLN)

Global community and pipeline of activities for early to mid-career professionals.



## Council & Future Leaders Committee

Join one of our 25 councils and committees dedicated to shaping the delivery of our global operations.



## Global Webinars

Your gateway to global developments and connecting with members around the world.



## Networks & Special Interest Groups (SIGs)

Member-led, theme-based, virtual networks & working groups.



## Knowledge Hub

On-demand content library.



## IPFA Learning

Comprehensive, practitioner-led training courses. (Additional paid service with member discounts)

Plus additional profile-raising and outreach opportunities:

- **Hosting & Speaking**
- **Facilitated Introductions**
- **Job Vacancy Promotion**
- **Logo on IPFA Website**



# IPFA Membership Levels

	<b>SOLO</b> Sole practitioner	<b>CORE</b> Limited team access	<b>LOCAL</b> Selected region only	<b>FULL</b> Full unlimited access
Regional Branch Access	All Regions	Access to One Region	Access to One Region	All Regions
Team Access	1 User	10 Users	Unlimited	Unlimited
Events, Roundtables & Regional Webinars	✓	✓ *excludes FLN	✓	✓
Knowledge Hub	✓		✓	✓
Future Leaders Network (FLN) & Committee			✓	✓
Global Webinars	✓			✓
Networks & Special Interest Groups (SIGs)	✓			✓
Hosting Opportunities	✓	✓	✓	✓
Facilitated Introductions			✓	✓
IPFA Branch Councils	✓	✓	✓	✓
Job Posts				✓
Logo Featured	Member Directory only	Member Directory only	Member Directory only	Homepage & Member Directory
IPFA Learning (*Member discount)	✓	✓	✓	✓

Click to see 2025 membership fees on our website



## Which membership category is right for my organisation?

<b>FULL</b> Full unlimited access	<p>Our top-tier membership category with exclusive benefits for those wanting to leverage our worldwide network or who have international teams.</p> <p>Ideal for those keen on staying updated with global developments, this will give your team unrestricted access to our Global Webinars, Networks &amp; Special Interest Groups, Future Leaders Network, facilitated introductions, job vacancy promotion, and the opportunity to feature your company logo on our website homepage.</p>
<b>LOCAL</b> Selected region only	<p>Provides regional team access to selected membership services.</p> <p>Suited for organisations with a strategic focus on specific markets within IPFA's regional categorisation and do not wish to access our wider benefits.</p> <p>IPFA Regions:</p> <p>Europe (including Turkey) , North America, Africa and the Middle East, Asia Pacific (including Australia)</p>
<b>CORE</b> Limited team access	<p>Restricted team access for up to ten individuals, featuring essential benefits tailored to smaller organisations or more nascent businesses within the industry.</p>
<b>SOLO</b> Sole practitioner	<p>Ideal for independent sole practitioners or those who have retired who wish to remain connected with industry.</p> <p>* Opting for this category will require approval by IPFA</p>





# NEXT STEPS



**Review the  
options**



**Select your  
membership level**



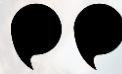
**Complete our  
renewals form  
or get in touch**

Contact us : [membership@ipfa.org](mailto:membership@ipfa.org) | T: +44 (0)20 7427 0900 | [www.ipfa.org](http://www.ipfa.org)





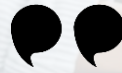
## What our members say



I really appreciate that IPFA provides a convenient platform (both virtual and in-person) to easily network and share views and experience with so many professionals from different fields and geographies and spanning from juniors to board-level – all around the very broad common theme of project finance.



It allows people the same interests in the same business to meet regularly and keep in touch.




A truly inclusive association where you are always welcome to contribute.



Connecting younger professionals with decision makers. Allows junior professionals to have the broader perspective on what's happening in industry and provides a mentorship within the sector.



Always talking about topical issues good quality events.

- Membership documents:  
Member fees & sign-up form  
List of 600k+ members
- Branch Councils & FLN Committees
- Our objectives
- Membership terms
- Linked 

Thought leadership

Connectivity &  
networking

Professional  
development

Knowledge sharing

Industry voice

Outreach & exposure