

The logo consists of two overlapping white circles. The left circle contains the letters 'IPFA' in a bold, black, sans-serif font. The right circle is empty.

IPFA

Network

The Energy Transition Network

A Guide to the Network & Special Interest Groups



Key topics with speakers on Hydrogen, Battery Market Attractiveness and Financing the Energy Transition, CCUS, Clean Fuels, Critical Minerals and more.



Almost 600 Full or Honorary Members from 170+ organisations have joined the Network.



Regional representation: 57% Europe, 29% Asia Pacific, 10% Americas, 4% Middle East & Africa.



Nine Special Interest Groups have been formed with nearly 150+ participants overall.



About The Network

The Energy Transition Network is focused on knowledge sharing and networking for our Full, Public Sector & Solo member community, creating content for the benefit of all our members.



Virtual Network Meetings are held bi-monthly, where possible in all time zones to be inclusive of our global membership.



The Network and associated Special Interest Groups are chaired and led by members.



Meetings focus on the critical challenges of the Energy Transition, focusing on topics such as energy storage, carbon capture, and policy & regulation.



Special Interest Groups are periodically formed with the objective of member-led collaboration and discussions.

You must be a Full ,Public sector or Solo member to access the Network

About Special Interest Groups

Our Special Interest Groups (SIGs) focus on key aspects of the Energy Transition, led by members with a focus on producing outputs for all our community.



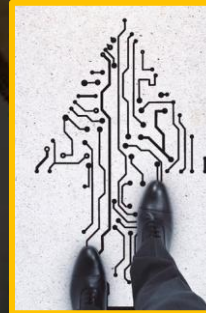
SIGs are small, focused working groups organised around a set of deliverables that add value and synthesize information from different perspectives.



SIGs operate on a fixed term with deadlines to deliver specified outcomes. SIGs may operate with a regional focus.



SIGs explore a specific topic or niche area of interest for the Network community. They collaborate to produce content for IPFA events and the Knowledge Hub.



SIGs are governed by the Network with SIG Chairs selected from the membership to drive activities.



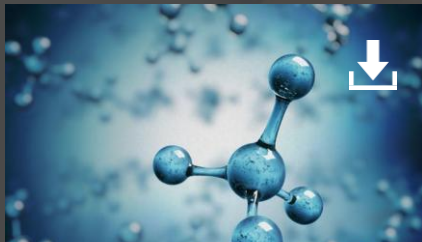
Maturity Assessment of Infrastructure for Net Zero



Salient Drivers of the Battery Storage Expansion across Europe



SAF – Opportunities and Risks for Investment



Emerging Global Low-Carbon Ammonia Market



Facilitating the Bankability of Energy Transition Projects

Coming soon!

- Accelerating Net Zero – Overcoming Barriers with Govt Action
- Developing a Methodology for Integrating Physical Climate Risk Insights into the Investment Lifecycle
- Decarbonisation of Transport – maximising opportunities for the sector throughout the transition

“ Chairing a SIG is a great way to connect with a global network of infrastructure professionals from diverse backgrounds and disciplines. The SIGs serve as useful forum where individuals can share their knowledge and experience in advancing energy transition projects and share global perspectives on current policy and market trends.

Dennis Trigylidas(SAF SIG Lead), Senior Advisor,
Energy Infrastructure, Fuels Sector
Natural Resources Canada/ Government of
Canada

“ Chairing a Special Interest Group is a rewarding experience that offers a unique opportunity to foster collaboration, facilitate meaningful dialogue, and build connections among infrastructure professionals. It provides a valuable platform to lead focused discussions, support shared learning, and contribute to the development of best practices and strategic insights across emerging topics.

Charlotte Whittlesea (Climate Risk SIG Lead) , Associate, ESG & Sustainability
Equitix



Extend your network, share outputs with your colleagues and peers



Profile your company's participation in an industry-led initiative



Join the Energy Transition Network [mailing list](#)



Attend bi-monthly meetings led by the nominated Chair



Suggest and initiate smaller Special Interest Groups for guided discussions and outputs



Contribute to the discussion in our private [LinkedIn Group](#)

IPFA

Network

Find out more



Chair | William Marder
Managing Director, Wilmington Trust



IPFA Lead | Shibani Radway
connect@ipfa.org



Register Interest

To find out more about Networks & Special Interest Groups and learn more about how you can benefit from being part of our global network register your interest or contact us.

Follow us on LinkedIn: IPFA-Global