



IPFA

The power of connection to create success

Your 2026 IPFA Membership Renewal



What's happening in 2026?

Navigating the next era of infrastructure & energy

As an IPFA member, you are connected to a global network of over 600 organisations and 20,000+ professionals, a vibrant community that offers exclusive insights, collaboration opportunities, and a platform to help shape the industry's future.

In 2026, we will explore the full breadth of infrastructure and energy investment, examining how the energy transition, rapid digitalisation, and evolving geopolitical landscape are reshaping investment priorities.

Members will benefit from enhanced IPFA platforms, including an upgraded Knowledge Hub with streamlined access, expanded Special Interest Groups, increased event locations and training opportunities, and a growing Future Leaders Network offering essential resources for career development - making it easier than ever to connect, learn, and lead.

We look forward to engaging with you in 2026.



Daisy Brooker
CEO

connect@ipfa.org



Key global themes shaping our 2026 activities:

>>> Pacing Decarbonisation

Closing tech gaps; scaling renewables; energy security; policy shifts; delivering a just transition.

>>> Investor Evolution

Evolving funding and financing models; higher risk appetite; rise of core plus and value-add infrastructure.

>>> Digital Transformation

AI's application to unlock value; shaping regulation; blending tech and infrastructure.

>>> Redefining Infrastructure

A system approach to financing complex projects; connecting digital growth with water and energy demands; infra-real estate convergence.

>>> Revitalising Partnership Models

Lessons learnt; re-emergence of social infrastructure; opportunities in defence; delivering the next generation of megaprojects.



Our global community

IPFA is the global network for infrastructure and energy professionals worldwide.

We are independent, non-profit, and here to support and connect a growing community that's passionate about financing infrastructure and energy projects.

Our diverse membership includes the industry's leading investors, lenders, advisors, developers, sponsors and government institutions. From senior leaders through to the next generation starting out, no other platform has the network or ability to enable connections the way we do.

20,000+ Connected professionals

2,000+ Future Leaders

600+ Member organisations

200+ Senior industry volunteers

20+ Regional networks



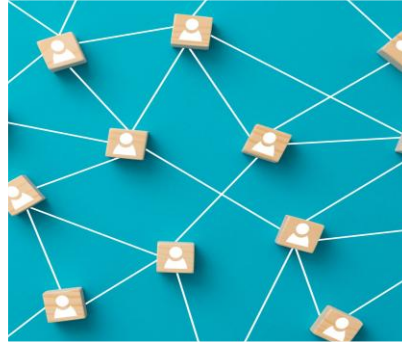
How IPFA can enable your business goals

Capacity building



- Stay ahead of the curve on the latest trends & opportunities
- Expand your knowledge by hearing from leading figures in industry
- Outsource your team's professional development

Industry connections



- Unrivalled networking
- Connections to a global community of 600+ public and private organisations
- Gain unique insights and build competitive advantage

Business growth



- Share thought leadership across renowned platforms
- Showcase your expertise to a global audience
- Increase brand elevation & name-recognition

Industry influence



- Influence the future of our industry
- Be a leading voice for collaboration, solutions and innovation
- Volunteer your expertise to steer the direction of IPFA



Membership services at a glance



Regional Events, Roundtables & Webinars

Connect with your local community and stay informed on the latest industry developments.

Future
Leaders

Future Leaders Network

A vibrant global community offering activities, insights, and connections for early to mid-career professionals and those stepping into new roles.



Knowledge Hub

On-demand content library delivering thought leadership and expertise to our global network.



Council & Future Leaders Committee

Shape the future of our industry by joining one of 25 councils and committees driving our global initiatives.



Global Webinars

Your gateway to industry developments and meaningful connections with members worldwide.



Energy Transition Network

A dedicated virtual network for knowledge sharing, collaboration, and connection across the global energy transition.



Special Interest Groups

Member-led virtual groups for collaborative discussion, insight exchange, and delivering real-world outputs.



IPFA Learning

Comprehensive, practitioner-led training courses designed to build skills and drive impact. (Paid service with member discounts)

Plus, additional profile-raising and outreach opportunities:

- Hosting & Speaking
- Facilitated Introductions
- Job Vacancy Promotion
- Logo on IPFA Website



IPFA Membership Levels

	<div>SOLO</div> <div>Sole practitioner</div>	<div>CORE</div> <div>Limited team access</div>	<div>LOCAL</div> <div>Selected region only</div>	<div>FULL</div> <div>Full unlimited access</div>
Regional Branch Access	All Regions	Access to One Region	Access to One Region	All Regions
Team Access	1 User	10 Users	Unlimited	Unlimited
Events, Roundtables & Regional Webinars	✓	✓ *excludes Future Leaders Network	✓	✓
Knowledge Hub	✓		✓	✓
Future Leaders Network & Committee			✓	✓
Global Webinars	✓			✓
Energy Transition Network	✓			✓
Special Interest Groups	✓			✓
Hosting Opportunities	✓	✓	✓	✓
Facilitated Introductions			✓	✓
IPFA Branch Councils	✓	✓	✓	✓
Job Posts				✓
Logo Featured	Member Directory only	Member Directory only	Member Directory only	Homepage & Member Directory
IPFA Learning (*Member discount)	✓	✓	✓	✓
2026 Membership Fees	GBP £950 EUR €1,100 USD \$1,150	Select regional access: Europe GBP £2,700 / EUR €3,200 ME & Africa GBP £1,200 APAC AUD \$4,400 Americas USD \$2,700 / CAD \$3,650	Select regional access: Europe GBP £4,900 / EUR €5,800 ME & Africa GBP £2,200 APAC AUD \$8,000 Americas USD \$4,900 / CAD \$6,600	GBP £6,600 / EUR €8,200 USD \$9,400 / CAD \$11,200 AUD \$13,200



The benefits of Full Membership

»» Connect to our global network of 20k+ professionals



Full Membership is our top-tier category that unlocks exclusive benefits for those wanting to leverage our worldwide network.

Why choose Full Membership?

- ✓ Get the latest developments in infrastructure & energy investment worldwide
- ✓ Opportunities to connect & exchange knowledge across borders
- ✓ Grow your international network
- ✓ Influence the direction of the global industry
- ✓ Gain global exposure
- ✓ Unlock global Future Leaders Network platforms
- ✓ Access 100+ worldwide events

Explore our dedicated Full Member platforms

"30 Minutes with..."	Virtual space to meet and connect. These monthly global webinars offer expert insights on infrastructure investment across critical asset classes.
Next in Infrastructure	Specialised webinars providing members with practical knowledge on emerging areas, investment strategies, and funding models.
Energy Transition Network	A dedicated virtual network for knowledge sharing, collaboration, and connection across the global energy transition.
Special Interest Groups	Join member-led virtual groups exploring cross-cutting themes, with dedicated groups for senior leaders and early-career professionals - a space to collaborate, share insights, and deliver real-world outputs.
Unlimited access	Everyone across your organisation can access IPFA platforms. Even colleagues outside the sector may benefit from our broader content, such as soft skills development.

The IPFA logo consists of two overlapping white circles. The letters 'IPFA' are written in a bold, black, sans-serif font across the center of the circles.

IPFA

Next steps

Step

1

Review the
options

Step

2

Select your
membership level

Step

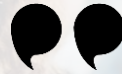
3

Complete our
renewals form
or get in touch

Contact us: membership@ipfa.org | +44 (0)20 7427 0900 | www.ipfa.org



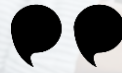
What our members say



I really appreciate that IPFA provides convenient platforms to easily network and share views and experience with so many professionals from different fields, seniority levels, and geographies.



IPFA allows people with similar interests across infrastructure to meet regularly and keep in touch.




A truly inclusive association where you are always welcome to contribute.



Connecting early career professionals with decision makers offers a broader perspective on what's happening in industry and provides a mentorship within the sector.



Always talking about topical issues, good quality events.

- Membership documents:
Member fees & sign-up form
List of 600+ members
- Branch Councils & FLN Committees
- Our objectives
- Membership terms
- Linked 

Thought leadership

Connectivity &
networking

Professional
development

Knowledge sharing

Industry voice

Outreach & exposure